

POS Peripherals



Modular POS Peripherals

POS Peripherals

Design: Asobi
Photography: Jupiterimages, iStockphoto, Asobi, Tipro
January 2013

- » **Tipro keyboards SLOVENIA**
t: +386 1 788 82 00
f: +386 1 788 82 99
e: tipro@tipro.si
- » **Tipro keyboards GERMANY**
t: +49 89 90 01 91 33
f: +49 89 90 01 91 36
e: tipro@tipro.de
- » **Tipro keyboards ITALY**
t: +39 040 291 60 96
f: +39 040 290 80 77
e: tipro@tipro.it
- » **Tipro keyboards CROATIA**
t: +385 1 619 81 54
f: +385 1 619 81 24
e: tipro@tipro.hr

Application

Department store, restaurant or bakery; specialty store, pharmacy or petrol station; grocery store, confectionary or parking lot; convenience store, hotel or toll collection...

All these applications require quick and effective checkout, but each with own specifics. Having that in mind, our modular keyboards and terminals are designed to be versatile.

Modularity & Programmability

- » Tipro FREE/FREE+/BeFREE product range comprise:
 - keyboard modules in different sizes and matrix arrangements
 - touchmonitor and touchcomputer module
 - card readers
 - identification modules
 - pointing devices

- » The concept of modularity and programmability provides a freedom to:
 - select modules required for particular application
 - arrange the modules in an ergonomic order suitable for the operator
 - configure settings and parameters to operate as required
 - create own configuration (keyboard, touchmonitor or touchcomputer) as a single compact unit
 - add new modules in the future
 - redefine settings/parameters remotely
 - upgrade the configuration



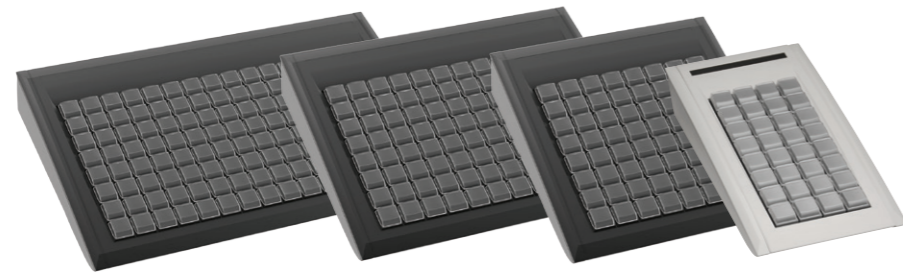
About TIPRO

More than 25 years of tradition in design and manufacture of human-interface devices for professional use in different industries and applications. Having complete business process in-house, TIPRO is in control of all phases from marketing and development to logistics and production. Understanding the requirements for reliability neither we make a compromise in design and component selection nor we take a risk of outsourcing. The modular concept enables flexibility, future upgrades and economical maintenance. Implementation of open-standard interfaces provides for a seamless integration into existing environments, typically with no intervention in the application software. Altogether, our products are tailored to demanding requirements (functional, ergonomic, performance, quality, environmental ...) as well as to a minimized total cost of ownership.



Keyboard Modules

FREE Matrix Layout



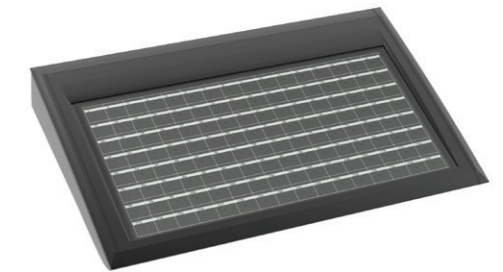
- add-on modules or stand-alone keyboards (if a Tipro controller is integrated in)
- wide selection of sizes (32, 64, 96 and 128 keys) and key arrangements (X-Y matrix or staggered qwerty)
- mechanical keys (Cherry MX) with ergonomic tactile feedback for frequent/intensive typing
- different keycap sizes (single, double horizontal, double vertical, quadruple, blind)
- two-part keycap structure: body & cover
- various colours of keycap bodies and keycap covers

- pad-printed key inscriptions on keycap bodies and/or covers (as a customization)
- transparent keycap covers enable use of paper legends underneath
- programmable key contents/codes (e.g. Ctrl+Shift+F5) emulating standard keyboard entry
- up to four different contents (layers) per key
- all key contents permanently stored in internal non-volatile memory of the Tipro controller

FREE Qwerty Layout



Membrane Protected



- Qwerty module:
 - > qwerty in lower 5 rows, 48 (3x16) programmable keys

- Membrane protected module:
 - > double protective membrane (lower for the keys, upper for a label sheet)
 - > Omron B3F short-travel keyswitch



Touchmonitor Module

Touchcomputer Module

FREE+



- low profile design – no obstruction of the view
- stable and sturdy – for touch operation both in horizontal and inclined (with a mechanism) position
- industrial grade 15.0" high brightness TFT LCD with XGA (1024x768) resolution
- 5-wire resistive touchscreen (ELO)
- dual interface (USB & RS232) touchscreen controller
- integrated triple interface (USB & PS/2 & RS232) Tipro controller to provide modularity and programmability
- dual interface (USB & analogue) audio option (Stereo loudspeakers and microphone input)
- various mounting options (table-top, pole-mount, VESA-mount)
- cable management – hidden and secured, but accessible

BeFREE



- an integration of the 15.0" touchmonitor module and an industrial computer
- slide-in exchangeable computer unit – easy maintenance/upgrade
- industrial grade motherboard with Intel's Atom D525 processor and ICH8M Southbridge (4GB RAM)
- Dual independent display support
- Ethernet redundancy (dual Gigabit LAN with teaming feature)
- optional Solid State Disk (provision for secondary SSD or HD)
- extensive connectivity (USB, RS232, Tipro bus ...)
- versions:
 - > powered – powered USB and COM ports, dual cash drawer port, hard disk
 - > standard – standard connectivity, hard disk
- built in Tipro controller enables:
 - > modularity and programmability
 - > energy saving modes
 - > touchscreen disable/enable control
 - > brightness adjustment and backlight on/off control
 - > programming LED indicators



Special Function Modules

Magnetic Card Reader and Identification Modules



Magnetic Card Reader

- › ISO 7811 compatible reader (3-track or 2-track version)
- › programmable: header, terminator and separator for each track, success and fail codes
- › bidirectional reading

Identification Modules

- keylock module
 - › 8-position lock
 - › set of 7 different keys
 - › programmable content for each lock position
 - › two programmable mechanical keys

- factory built-in keylock
 - › 8-position lock with 7 different keys
 - › can be built-in into FREE keyboard modules [except for keyboard with 32 keys]
- iButton reader
 - › magnetized socket to firmly hold the iButton
 - › reads unique 64-bit registration number of an iButton
 - › programmable: insertion header and terminator, removal header and terminator
 - › two programmable mechanical keys

Pointing Devices



Pointing Device Modules

- trackball module
 - › 16mm trackball
 - › USB interface
 - › optional PS/2 interface
 - › left and right mouse key
 - › no driver required

- factory built-in touchpad
 - › replaces 3x4 keys
 - › USB interface
 - › optional PS/2 interface
 - › integrated left and right mouse buttons





Products/Modules introduced in this catalogue represent a fraction of the existing FREE/FREE+/BeFREE portfolio. The selection has been made to best suit the application. However, all other FREE/FREE+/BeFREE modules can be freely combined along into a required terminal configuration.

Furthermore, our standard product range represents a technological base for adaptations/modifications and future customer/application specific developments.

Monitors & Displays

BLUE+ 17



- stable & adjustable 17" touchmonitor
- easy adjustable inclination from vertical to horizontal position
- metal stand for comfortable operation
- cable management – hidden and secured, but accessible
- dual-interface video (VGA and DVI-D) and touch-screen (RS232 and USB) controller
- VESA100 mount option

BLUE+ 10



- customer display – cash tray
- 10,2" wide screen TFT LCD with XGA (1024x600) resolution
- multifunctional – customer information, advertising, money handling
- easy integration – second screen via USB
- horizontal, inclined or vertical positioning
- Table-Top and VESA75 mount version

BLUE+ 8



- customer display
- 8,0" TFT LCD with SVGA (800x600) resolution
- wide tilt and swivel range to adjust display position
- cable management – hidden and secured, but accessible
- VGA or USB (table-top and VESA only) interface
- three different versions
 - > Table –Top
 - > Table-Through
 - > VESA 75-mount

Alphanumeric Customer Display



- customer display
- 2x20 large font characters (9.6mm)
- blue/white LCD with low energy consumption
- no additional power supply
- adjustable inclination / tilt and swivel
- interface:
 - > RS232, or
 - > USB (as virtual COM), or
 - > external Tipro bus

